

Inspirstar Programmable Microcurrent Stimulator

- the 1st FDA Approved Programmable Microcurrent
Stimulator



INSPIRSTAR INC.

Inspirstar Inc. Copyright

1

Contents

- **Who use Inspirstar PMS?**
- **Why use Inspirstar?**
- **New Features**
- **Basic Terminology and Concepts**
- **Import Existing Protocols**
- **Create New Protocols**
- **Save a Profile**
- **Write a Profile to Inspirstar IS02 PMS™* Unit**
- **Read a Profile to Inspirstar IS02 PMS™* Unit**
- **Print Profile**
- **Change IS02 Settings**
- **Real Time Control Panel**
- **Support**



*PMS™: Inspirstar Programmable Microcurrent Stimulator

INSPIRSTAR INC.

Inspirstar Inc. Copyright

2

Who use Inspirstar?

- **For FSM practitioners, the software plus the portable unit is an All-In-One FSM system.**
 - Full programmable capability
 - Real time treatment
- **The portable unit is ideal for patients to use at home or in the office.**
 - Frequent treatment gives better result.
 - Easy, automatic, cost-effective
- **Electro-acupuncture applications like Milly Ng's probe technique.**



INSPIRSTAR INC.

Inspirstar Inc. Copyright

3

A letter from a patient

To Whom It May Concern:

After having the Inspirstar Microcurrent machine used on me for treatments at my physical therapist and my pain doctor, I noticed a difference in my pain level. So much so, I spoke with my husband and he agreed that I should purchase one. I don't remember exactly how long ago I bought it, but I believe it has been about a year and one-half. **I use my Inspirstar religiously with unbelievable results.** I love the fact that It has been programmed specifically to take care of the problems I have! **I had MRSA that settled in my hip replacement seven years ago. During the course of three years, I couldn't walk, felt awful and had no energy, not to mention other health issues with which I was dealing. Today, I am able to take a walk, clean my own house and feel better than I have in the past ten years. Inspirstar has changed my life and actually, given me back my life!** I thank everyone who has participated in the creation of a machine that helps health issues without being invasive! Soni Durham



INSPIRSTAR INC.

Inspirstar Inc. Copyright

4

Why uses Inspirstar

- **Bring more profit into your practice – A model for success**
 - How do you charge for reprogramming the units?
 - By using the home unit, won't this reduce the number of weekly visits to my practice?
 - The sale of Inspirstar unit will make up the difference of less visits of previous patients.
 - More available time to see new patients.
 - Patients will appreciate.
 - Better results give more referrals.
 - How does Inspirstar help to obtain better results?



INSPIRSTAR INC.

Inspirstar Inc. Copyright

5

Why use Inspirstar?

- **Questions you may concern to select a device**
 - Initial investment
 - Future cost – software renew fee, upgrade fee, accessories/supply cost
 - Customer service, technical support
 - Successful stories
 - Protocol storage and expansion
 - Programmability
 - Waveform fully programmable
 - Need calibration
 - New features
 - Leading technology
 - Customized machine



INSPIRSTAR INC.

Inspirstar Inc. Copyright

6

What is New in v2.8 and v2.9

V2.8 New Features

- Support of 10-Protocol in IS02BA
- “Change IS02 Settings” to enable or disable some features in IS02BA
- Improved Real Time Control Panel.

V2.9 New Features

- Random frequency feature
- Loop/Repeat feature
- Encryption



INSPIRSTAR INC.

Inspirstar Inc. Copyright

7

Installation

☆Install Inspirstar Profile Editor Software

☆Run the file setup.exe in the root directory of the CD-ROM

☆Install USB Driver (only for new users)

☆Start ->All Programs ->Inspirstar->USB Driver Installer

☆Connect Inspirstar IS02 PMS unit to PC

☆Plug Inspirstar USB Adaptor into a USB port of PC.

☆Connect USB Adaptor to IS02 unit.

☆Put batteries into IS02 unit.



INSPIRSTAR INC.

Inspirstar Inc. Copyright

8

Basic Terminology and Concepts

☆ Frequency Pair

☆ Each frequency pair defines the microcurrent parameters of the output of two channels.

☆ Protocol

☆ Each protocol holds one or more frequency pairs.

☆ A therapy protocol is usually used to treat one symptom.

☆ Profile

☆ A Profile holds five therapy protocols. *

☆ A user profile is usually used for a patient or a typical usage. Each patient may have a different a profile.

*Profile Editor v2.5 can support more than 5 protocols in a profile. But IS02 units support exact 5 protocols.



Basic Terminology and Concepts

File Structure

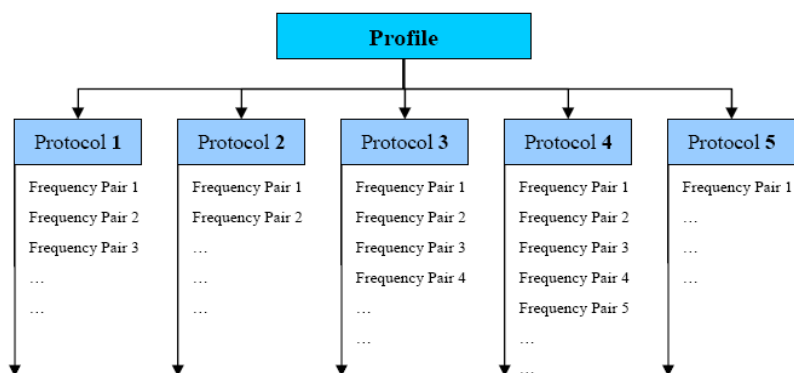


Figure 2 the Structure of a Profile



Import Existing Protocols

☆ Start Profile Editor

☆ Start->All Programs->Inspirstar->Inspirstar Profile Editor.
The first window is Profile window.

☆ Import a protocol from existing protocol library if you have

☆ Use buttons “Import” and select a protocol from existing protocols.



☆ Import protocols. (up to 10 protocols)

LIST OF PROTOCOLS:
Protocol Operations: Add New Import Export Remove Edit Move Up

Line	Protocol Name	Total Time	I(uA)	Beep	Description
1*	ARMD and nicotice abuse	40'	40	<input checked="" type="checkbox"/>	
2*	ARMD Dry and Cataracts	45'	40	<input checked="" type="checkbox"/>	ARMD dry and cataracts
3*	ARMD Dry and Dry Eyes	58'	40	<input checked="" type="checkbox"/>	
4*	ARMD Dry	38'	40	<input checked="" type="checkbox"/>	
5*	ARMD wet and detox	54'	40	<input checked="" type="checkbox"/>	
Total		235'		<input checked="" type="checkbox"/>	Summary of this profile.



INSPIRSTAR INC.

Inspirstar Inc. Copyright

11

Create New Protocols

☆ Start a new protocol

☆ When the cursor is on a protocol, click “Edit” to start a new protocol. This is Protocol Window.

LIST OF PROTOCOLS:
Protocol Operations: Add New Import Export Remove Edit

Line	Protocol Name	Total Time	I(uA)	Beep	Description
1	Protocol 1	0'	0	<input checked="" type="checkbox"/>	
2	Protocol 2	0'	0	<input checked="" type="checkbox"/>	

☆ In the opened window, edit Frequency Pairs for this Protocols.

Protocol 1 in untitled.profile* - Inspirstar Protocol Editor

Protocol Information
Therapy time: 28' Description: this protocol is for ...

List of Frequency Pairs: (3 pairs)

Pair #	F1(Hz)	F2(Hz)	I(uA)	T(min:sec)	Period(ms)	K0	K1	K2	K3	Polarity	Phase	Description
1*	123	56	100	5'	2,600	5	20	75	0	Alternative	0	
2*	45	986	100	15'	2,600	5	20	75	0	Alternative	0	
3*	5.9	2	100	8'	2,600	5	20	75	0	Alternative	0	
new												



INSPIRSTAR INC.

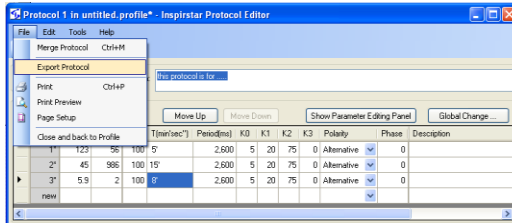
Inspirstar Inc. Copyright


12

Create New Protocols – cont'd

☆ **When the editing of a protocol is finished,**

☆ You may want to save this protocol to a protocol file for future use by clicking “File -> Export Protocol”. In this way, you can build your protocol library.



☆ You can click  or click “File->Close and back to Profile” to go back Profile window. Note that you won't lose any protocol information by close this window.



INSPIRSTAR INC.

Inspirstar Inc. Copyright

13

Save a Profile

☆ **In the Profile Window, save this profile which includes multiple protocols into a profile file on your computer.**

☆ File -> Save Profile As

☆ **Profile Methodology**

☆ Save a different profile anytime before you re-program a unit. In this way, you can keep all records.

☆ Profile name examples

☆ PatientName_Date.profile. Example: John_May10_2008.profile

☆ Usage_Date.profile. Example: OfficeUnit2_Jun6_2008.profile




INSPIRSTAR INC.

Inspirstar Inc. Copyright

14

Write a Profile to IS02 PMS unit

☆When a profile is edited or an existing profile is open

☆Use the button “Write” to write into the unit. 

☆Use Password to protect your profile, preventing other people from reading the profile.

Password:

☆Make sure USB adaptor is connected properly.

☆Click the button “Write” again to finish the operation.

Note: Anytime when the “Write” operation is executed, all protocols in this profile are written into the unit and all existing protocols in the unit are replaced.



INSPIRSTAR INC.

Inspirstar Inc. Copyright

15

Read a Profile from IS02 PMS unit

☆Use the button “Read” to read the profile from the unit.



☆Use “Read” operation to verify that “Write” operation has been done correctly.

☆Another purpose of “Read” operation is to modify the profile inside the unit and write back to the unit. (Don’t forget to save a new profile on your computer before you write back, for your record.)



INSPIRSTAR INC.

Inspirstar Inc. Copyright

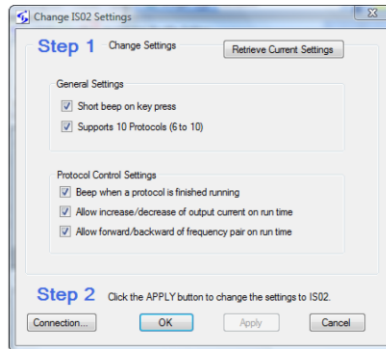
16

Change IS02 Settings

☆ You can change some control settings of IS02BA unit

☆ In Profile Main Window, Click “Tools -> Change IS02 Settings”.

☆ Connect to IS02BA, Change settings and then Click “Apply”.



Inspirstar Inc. Copyright

17

Real Time Control Panel*

☆ With this feature, you can treat patients in real time mode. When you click the frequencies and current on the screen, the changes are applied on patients immediately.

☆ Click “Tools -> Real Time Control Panel”



*This feature is not enabled by default. You need to contact Inspirstar to enable it.



Inspirstar Inc. Copyright

18

Support

- ☆ For detailed operations, please refer to the documents *Inspirstar Profile Editor User Guide* and *Inspirstar IS02BA User's Manual*. These documents are installed on your computer. You can access them by clicking your computer "Start"-> "All Programs" -> "Inspirstar" -> "Documents".

Please contact Inspirstar for any question.

Inspirstar Inc.
Phone: 480-634-8708 or 1-866-643-0180
Fax: 480-634-8982
Email: support@inspirstar.com

Thank you!



INSPIRSTAR INC.

Inspirstar Inc. Copyright

19